

# Ultimate Enjoyment



MarinaPark  
Residentie Bloemendaal

- Surroundings • Out and about • Parkfacts
- Our accommodations • Kids' pages • MarinABC

# Welcome to MarinaParken

Ultimate enjoyment; that is our slogan, and for good reason, because when you get away from it all, that is of course what you want. Get away from it all, go on excursions, enjoy luxurious accommodation, good food and drink, and then come home rested. MarinaPark Residentie Bloemendaal facilitates on all these points. This park, opened in 2024, is located on the Vogelenzang estate in the Bloemendaal municipality between the woods, bulb fields and dunes. Its central location and short distance to the coast make it the ideal place to spend your beach holiday.

The park is largely furnished with luxury holiday homes and has a camping area. At the park you will find a lobby, a playing field, a restaurant, a shop, a 25-metre outdoor swimming pool, a children's pool, an air trampoline, a jeu-de-boule court and several playgrounds. In most holiday periods, the kids can also have fun with our friendly entertainment team.

Schiphol Airport, Amsterdam, Haarlem and several well-known seaside resorts such as Bloemendaal aan Zee, Zandvoort and Noordwijk are a stone's throw away. The area also has a number of well-known theme parks and the world-famous Flower Parade is organised every year. Formula 1 and motor sports enthusiasts can also enjoy themselves, as our park is at cycling distance from Circuit Zandvoort.



## Ultimate enjoyment 2024 is a publication of MarinaParken

Tweede Doodweg 17  
2114 AP Vogelenzang  
lobbyresidentiebloemendaal@marinaparken.nl  
☎ +31 (0)23-5847014  
www.marinaparken.com

FOTO'S EN TEKST  
MarinaParken

REALISATIE  
WerffMedia BV Doetinchem  
www.werffmedia.nl





## FACILITIES:

- Luxury holiday villas
- Spacious camping pitches
- Cosy log cabins
- Sanitary buildings
- Private parking at the villa
- Lobby at the park
- Shop
- Bicycle rental
- Brasserie Cheers
- Children's playground
- Outdoor pool 25 metres
- Children's pool
- Boules pitch
- Barrier
- Toilet blocks with shower, washing machine/ dryer and chemical toilet disposal point

more beautiful  
we can't make it

**04** The ultimate enjoyment

**08** Out and about

**12** Park facilities

**16** Parkplan

**18** Villas

**22** Children's pages

**26** MarinABC

# the ultimate enjoy

Holiday in a unique location, close to the North Holland coast, so an ideal place for a beach holiday. For a day of shopping, you can easily reach Amsterdam or Haarlem.

And for the kids, there are lots of activities and play opportunities at the park or plan a day trip to one of the famous theme parks in the area, such as the Linneaushof, Duinrell or Madurodam. Would you rather go cycling or walking through the dunes or relax at one of the many beach clubs? There is plenty to do for young and old, so that will be ultimate enjoyment!





## Our six promises

- Direct booking = always the best deal
- Cancellation free of charge up to 30 days prior to arrival
- Free rebooking up to 14 days before arrival
- Highest guest satisfaction
- Always the best locations
- All-in-one prices



**Triple A locations**

MarinaParken's parks are located directly on the water or by the coast.



**Sustainable villas**

Holidaying in an exclusive, spacious villa with its own terrace and parking place.



**Completely carefree**

Personalized service. Ultimate enjoyment.

# HOOGVLIET HEEFT ALLES VOOR FAMILIES.

Voor thuis of op vakantie



Ruim 100  
aanbiedingen  
per week!

En  
élke dag  
vers brood  
uit eigen  
bakkerij!

TEGEN INLEVERING VAN DEZE BON  
**GRATIS 1 ZAK WITTE  
BOLLEN À 6 STUKS**  
T.W.V. € 1,29



Geldig van 1 april 2024 t/m 30 september 2024

Geldig van 1 april 2024 t/m 30 september 2024.

 Hoogvliet  
supermarkt

Kijk voor onze openingstijden en de  
aanbiedingen op [hoogvliet.com](https://www.hoogvliet.com)

Grachtweg 47  
Lisse

 Knip deze bon uit en lever hem in!

 Hoogvliet  
supermarkt



**kuiper**  
caravans



## **Kuiper Caravans Verkoop chalets stacaravans en bungalows!**

- Inkoop chalets en stacaravans
- Nieuw bouw chalet op maat gebouwd
- Ruime keus uit voorraad modellen nieuw en gebruikt
- Transport en plaatsing van chalets en stacaravans
- Mantelzorg chalets
- Inruil van chalet, stacaravan, auto, boot enz.
- Financiering mogelijk

**Overweegt u een stacaravan  
of chalet aan te schaffen?  
Nieuw, gebruikt, 4 seizoenen  
of alleen seizoen gebruik?**

Kuiper Caravans biedt vele opties en geeft u graag uitleg over alle mogelijkheden en advies over uw aankoop.

Bent u nog niet in het bezit van een staanplaats? Door de vele jaren ervaring en ons grote netwerk met recreatieparken kunnen wij u hiermee ook van dienst zijn. Wij ruilen uw huidige stacaravan, chalet, auto, motor, boot, enz. natuurlijk graag in tegen de gunstigste prijs.



Meer info via **Rob Kuiper** ☎ 0226 - 74 52 62 🌐 [www.kuipercaravans.nl](http://www.kuipercaravans.nl)

# Out and about



## AMSTERDAMSE WATERLEIDINGDUINEN

This area covers 3,400 hectares and is the largest nature reserve on the Dutch coast. You can therefore take endless walks through forests, dunes and heathland. Almost everywhere you can get off the paths to have a nice stroll. And who knows, you might even come across a fallow deer, roe deer or fox!

## DE BOLLENSTREEK IN THE SUMMER

Experience the Bulb Region in summer! With the coast and its cosy seaside resorts, the Bulb Region has a lot to offer its visitors for a summer beach holiday.

## BLOEMENCORSO

The most famous parade is the Bloemencorso van de Bollenstreek: in April, the parade travels from Noordwijk to Haarlem. The parade consists of about 50 decorated carriages.



## LINNAEUSHOF

In neighbouring Bennebroek, you will find Europe's largest playground with more than 350 pieces of play equipment. There is something for every age group. There is also an indoor playground for when the weather is bad.

## MADURODAM

Madurodam is the smallest city in the Netherlands: a miniature city. The buildings, as well as the cars and planes, are 25 times smaller than in real life. You really feel like a giant when you walk through the miniature city.

## HAARLEM

Day out in Haarlem? Within 20 minutes by car, you can be in Haarlem city centre. By train, you can get there within 10 minutes. You can park your car at Hillegom station (5 minutes from the park).







## AMSTERDAM

A day out in Amsterdam? Amsterdam is easy to reach by both car and train. Our capital city is bustling and offers everything for a great day out.

## CASTLEFEST

The gardens of Keukenhof Castle in Lisse are the setting for the medieval fantasy outdoor event Castle fest.

## SLOT TEYLINGEN

The Ruins of Teylingen is located on an island in the village of Teylingen near Sassenheim. The remains of the castle where Jacoba of Bavaria had her residence can be visited.

## NOORDWIJK, ZANDVOORT AND LANGEVELDERSLAG

The beaches of the various seaside resorts are not far away. For example, the wide beach of Langevelderslag is only 7 km away from our park. You can also get there in no time by bike or car!

## KIDSZOO

Clambering, climbing, sliding, romping and learning while playing. Indoor playground KidsZoo is 100% adventure and fun for children from 1 to 12 years old and luxurious lounging for parents and supervisors. Discover it for yourself! At KidsZoo in Noordwijkerhout.

## DUINRELL

At Duinrell, everyone experiences a splashing day out. For a rainy day, the park has the Tiki Pool which is the largest indoor waterslide paradise in the Benelux.

## SPACE EXPO – NOORDWIJK

Space travel is exciting and adventurous. You can discover everything about it for yourself. A visit to Space Expo is a breathtaking and educational experience for young and old.

## MUSEUM DE CRUQUIUS

Former steam pumping station 'De Cruquius' from 1849 is a world-class industrial monument. The old steam pumping station is the technical highlight of the romantic steam era in the Netherlands.

## DE KEUKENHOF

Today, the former hunting grounds and also herb garden of Teylingen Castle (Sassenheim) need no introduction at home and abroad. The beautiful sea of flowers can be admired from late March to mid-May.



## THERE IS SO MUCH TO DO

# Kennemerland



Kennemerland is a historic region in the province of North Holland. This region, rich in nature and culture, extends broadly from the North Sea Canal in the south to the municipality of Alkmaar in the north. It includes parts of the coastal areas and the hinterland, including cities such as Haarlem.

### **HISTORY**

The history of Kennemerland dates back to the Middle Ages, when the area was inhabited by the Kennemers, a Germanic tribe. Over the centuries, the area experienced several power struggles, mainly between local lords and the Counts of Holland. In the 17th century, the region flourished through agriculture, trade and the presence of wealthy merchants from Amsterdam who built mansions and castles there.

### **NATURE AND LANDSCAPE**

Kennemerland is known for its varied landscape consisting of dunes, forests, beaches and polders. The Zuid-Kennemerland National Park is one of its highlights, with its vast dune areas harbouring rich flora and fauna. This area offers beautiful routes for walkers, cyclists and nature lovers.

### **CULTURE AND HERITAGE**

Besides its natural beauty, Kennemerland is also known for its rich cultural heritage. There are many historical towns with old churches, museums, and monuments.

Haarlem plays a central role in the region's culture and history with its historic city centre, the Frans Hals Museum and the annual flower parade.

### **ECONOMY AND SOCIETY**

Over the 20th century, the region has developed economically with a mix of industry, services and tourism. The ports of IJmuiden are important for fishing, while the beaches of Zandvoort and Bloemendaal are popular tourist destinations, especially in summer.

### **TOURISM**

Kennemerland attracts many visitors for its beaches, dune landscapes, and cultural events. Zandvoort is also internationally known for the Circuit Zandvoort, which regularly hosts car races, including the Formula 1 Grand Prix of the Netherlands.

In short, Kennemerland is an interesting destination for residents and visitors alike.



De Amsterdamse Waterleidingduinen (AWD) are a unique nature reserve and an important part of the drinking water supply for Amsterdam. This area plays a crucial role in the purification process of drinking water and is also a beautiful recreational area.

## HISTORY

Its history dates back to the late 19th century. The growing need for clean drinking water for Amsterdam led to the construction of this area. The first waterworks was established in 1853, and in 1903 the dunes were officially put into use for water extraction.

## WATER EXTRACTION AND NATURE MANAGEMENT

The area covers about 3,400 hectares and is one of the largest water extraction areas in the Netherlands. Surface water from the Rhine is led to the dunes, where it is filtered through the sand. After this natural filtration, the water undergoes several purification steps before it is transported to Amsterdam as drinking water.

## FLORA AND FAUNA

The AWD are home to a wide variety of animals and plants. Of particular note is a large population of fallow deer, which roam freely in the area. Foxes, rabbits, different species of birds and rare plant species can also be found in the dunes. The diversity

in landscape types, from open sandy plains to dense woodlands, makes it an interesting place for nature research and education.

## RECREATION

For recreationists, the area offers many hiking trails, from short rounds to long-distance walks. Cycling is not allowed in this area, maximising the tranquillity and nature experience. Photography, bird watching and even deer spotting are popular activities. However, visitors are encouraged to stay on the paths and not disturb nature.

## ACCESSIBILITY

The AWD are open to the public all year round, but entry requires an entrance ticket. There are several entrances, each with parking and sometimes catering facilities.

The combination of its crucial role in drinking water supply, rich biodiversity, and opportunities for recreation make the Amsterdamse Waterleidingduinen a unique and valuable area within the Netherlands.

# A pleasant stay in our park



## SWIMMING POOLS

Take a refreshing dip in our 25-metre outdoor swimming pool (1.40 m deep). For the little ones, we have a children's pool (40 cm deep). The pools are located on a large lawn with various play equipment and a restaurant.



## BRASSERIE CHEERS

On our park you will find Brasserie Cheers, where you can enjoy a meal, a refreshing drink or a cup of coffee. You will find the Brasserie by the large playing field near the swimming pools. On sunny days, the terrace is the place to enjoy some time together.



## ANIMATION

During various holidays, we offer various entertainment programmes for young and old. You can find an overview of the planned activities in the app or ask one of our lobby staff.



## E-CHOPPERS

Hire an E-chopper and explore the Bloemendaal area. In the immediate vicinity of MarinaPark Residentie Bloemendaal you will find several routes that are definitely worthwhile.



### **PLAYFIELD**

Children can have fun here all day long. With several playgrounds, bocce courts, an air trampoline and swings, this is the ideal place for kids of all ages.



### **BIKE RENTAL**

Explore the area by bike; because from our park there are several beautiful cycling routes that take you past bulb fields, through forests and the dune landscape. Bikes can be rented in our lobby or via our app.



### **SHOP**

Near the lobby you will find our shop. You can go here for fresh rolls and the necessary groceries.



### **LOBBY**

The lobby at the park entrance is open daily. Here you can ask questions about the park, bike and E-chopper rental and get information about the area, among other things.

# Dé routeplanner voor fietsen en wandelen!

**DOWNLOAD GRATIS\***



App Store



Google Play Store



**01** *Fietsknoop*

\*Voor € 6,99 per jaar meer mogelijkheden en geen reclame in de app. Stopt vanzelf

[www.fietsknoop.nl](http://www.fietsknoop.nl)

# De tofste pleisterplaats op je route!



- ✓ Zelf een bakkie leut maken
- ✓ Nabij wandel- en fietsroute
- ✓ Informatie over de omgeving
- ✓ E-bike opladen en bandplakken
- ✓ Pauzeren, genieten, ontdekken

**650**  
rustpunten  
langs wandel- en  
fietsroutes

[www.rustpunt.nu](http://www.rustpunt.nu)

**Ontdek de  
RUSTPUNTEN!**

# EEN <sup>HELE</sup> DAG VOL AVONTUUR!



*zelf de lori's voeren*

**ONLINE TICKETS MET VOORDEEL**



*spectaculaire vogeldemonstraties*



*XXL speeltuin*



**AVIFAUNA.NL**

**NIEUW IN 2024**

**GIGA GIEREN VOLIERE**



Hoorn 59  
2404 HG Alphen a/d Rijn  
0172 - 256 256  
contact@avifauna.nl

Volg ons op:
















**Avifauna**  
vogels en zoo







**marinaparken**  
the ultimate enjoyment

-  Information map
-  Reception/manager's house
-  Brasserie Cheers
-  Brasserie Cheers
-  Store
-  Laundry service
-  Toilet building
-  Waste water disposal for campers
-  Swimming pool (25m)
-  Children's pool
-  Playground equipment
-  Recreation room
-  Parking spot

## MarinaPark Residentie Bloemendaal

Tweede Doodweg 17  
2114 AP Vogelenzang  
Tel: 0031 (23)-5847014  
[www.marinaparken.com](http://www.marinaparken.com)

Email: [lobbyresidentiebloemendaal@marinaparken.nl](mailto:lobbyresidentiebloemendaal@marinaparken.nl)

# Exclusive, detached holiday villa's

Our holiday villas have high windows, a luxurious kitchen and a bathroom with rain shower. In the luxury variant, you also have several bathrooms and walk-in showers. The wellness types have a duo sauna so you can relax. Whichever villa you choose, you will certainly enjoy it!

## VILLA BLOOMINGDALE 4 PERSONS

Our luxurious, comfortable and detached recreation villas for 4 people give a spacious feeling, as they are equipped with high windows. The future-proof recreation villas are fully electric and therefore completely gas-free. They are also equipped with solar panels and an indoor storage room.

The villa has a spacious living room with a luxurious interior with TV, dining room and kitchen. The luxury kitchen is equipped with an induction hob with built-in extractor fan, combination oven and dishwasher. This type of villa has two bedrooms, both with 2 x single box spring, a TV and ample storage space. Upon arrival, we will have made the beds for you. The 2 luxurious, spacious ensuite bathrooms have a sink and a walk-in shower. The toilet is separate.

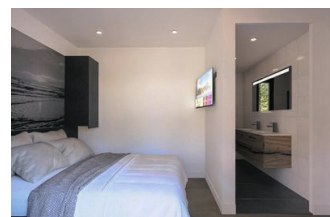


## VILLA BLOOMINGDALE LUXE

The villa features a spacious living room equipped with luxury furnishings with TV, dining room and kitchen. The luxury kitchen is equipped with an induction hob with built-in extractor fan, combination oven and dishwasher.

This type of villa has two bedrooms, both with 2 x single box spring, a TV and ample storage space. On arrival, we will have made the beds for you.

The 2 luxurious, spacious ensuite bathrooms have a washbasin and a walk-in shower. The toilet is separate.



## VILLA DUINZICHT 6 PERSONS

The luxury, spacious kitchen is equipped with an induction hob with built-in extractor fan, combi microwave, fridge and dishwasher.

This type of villa has 3 bedrooms, 1 of which is on the ground floor, all with 2x single box spring beds, a TV and sliding wardrobes. The first floor can be reached by means of a fixed staircase to the loft. Bathrooms are equipped with a rain shower, washbasin and toilet.



**THIS VILLA IS EXPECTED**

## VILLA BLOOMINGDALE WELLNESS

The villa features a spacious living room equipped with luxury furnishings with TV, dining room and kitchen. The luxury kitchen is equipped with an induction hob with built-in extractor fan, combination oven and dishwasher.

This type of villa has two bedrooms, both with 2 x single box spring, a TV and ample storage space. Upon arrival, we will have made the beds for you.

The spacious bathroom has a duo sauna, high-quality materials, a rain shower, single washbasin and toilet.



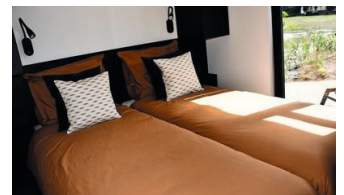
## VILLA L-BLOOMINGDALE 4 OF 6 PERSONS

This type is offered for 4 or 6 persons and has a spacious living room with luxurious furnishings and TV, a dining room and kitchen.

The kitchen is equipped with an induction hob with built-in extractor fan, combination oven and dishwasher.

The 6-person villa has two bedrooms with 2 x single box-spring beds, a TV and ample storage space. The third bedroom has a bunk bed. The spacious luxury bathroom has a rain shower, toilet and washbasin.

In the 4-person model there are 2 bedrooms with 2 x single box-spring beds and 2 spacious ensuite bathrooms with rain shower and washbasin. The toilet is separate.



All villas have a private terrace and spacious garden. Our villas are non-smoking and have Wi-Fi. One car can easily be parked at each villa. Upon arrival, the beds are made. Photos shown are an impression. No rights can be derived from these images.



# Camping

You will find at MarinaPark Residentie Bloemendaal, apart from the luxury holiday villas, spacious camping and campervan pitches and well-equipped toilet buildings. The sanitary buildings all have toilets, showers and wash basins. There is also a possibility to empty chemical toilets. You can also use all the facilities our holiday park has to offer.

# THE OUTLET AROUND THE CORNER

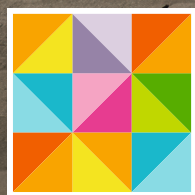
Je hoeft niet naar het einde van de wereld te rijden

ALTIJD  
30-70%  
KORTING



GUESS

adidas



amsterdam  
the style outlets

📍 Halfweg



10 min. van Amsterdam CS

# COOP

## VOOR AL JE VAKANTIE BOODSCHAPPEN

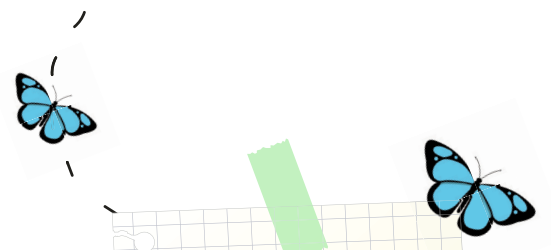
- Gekoelde dranken
- Iedere dag verse (stok)brood
- Alles voor de BBQ
- Stomerij
- Slijterij
- Staatsloterij / Lotto

Coop Hulsbosch Deken Zondaglaan 55 Vogelenzang 023 - 5846416

maandag t/m vrijdag 8-19 uur, zaterdag 8-18 uur, zondag 12-17 uur



# Come and play



Did you know that the Netherlands has over **2,000** campsites? Truly a camping country, so plenty of choice!

**Did you know?**

### Which key remains?



### Plus or minus?

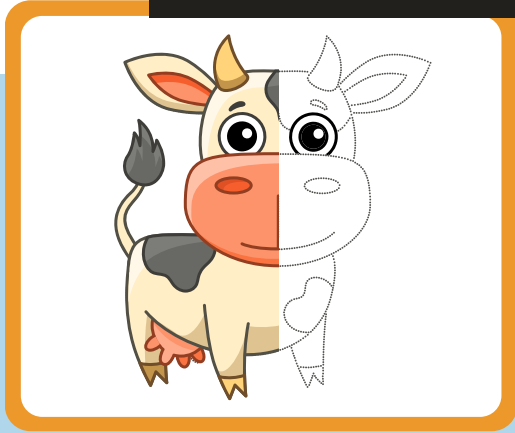
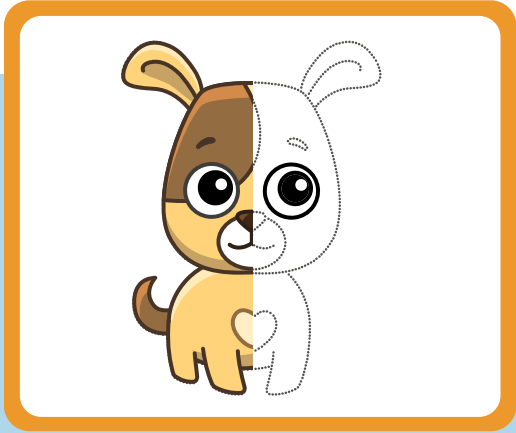
$1 \bigcirc 1 = 2$	$6 \bigcirc 2 = 4$
$2 \bigcirc 1 = 1$	$7 \bigcirc 2 = 9$
$3 \bigcirc 2 = 5$	$1 \bigcirc 5 = 6$
$2 \bigcirc 2 = 4$	$3 \bigcirc 4 = 7$
$4 \bigcirc 1 = 3$	$5 \bigcirc 3 = 2$

### Which footprints belong to whom?


**Do you want to know the answers?**



**Do you complete the drawings?**



**Are you taking the car home?**



**DE JONG Kampeer & Recreatie**

21.000 m<sup>2</sup> kampeer-, reis- en recreatieplezier



**DE JONG**  
Kampeer & Recreatie  
HILLEGOM-DE ZILK

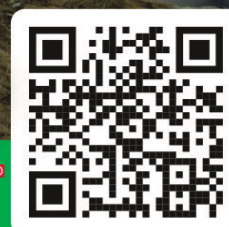


Beeklaan 18a • 2191 AB • Hillegom-De Zilk

[www.dejongrecreatie.nl](http://www.dejongrecreatie.nl)

**TEUN**<sup>®</sup>

**OUTDOORSPECIALIST NL**



# Ook op vakantie 1 plek voor al uw boodschappen

**Albert Heijn en SPOT zijn 7 dagen per week geopend.  
Alle overige winkels van maandag t/m zaterdag.**

**Zwetsloot**  
Retail  Gall & Gall 

  
**SPOT**



Albert Heijn Zwetsloot Bennebroek  
DA drogisterij Zwetsloot  
Gall & Gall Zwetsloot

Schoollaan 23-24  
2121 GC Bennebroek

**Gratis parkeren bij alle winkels!**





**Restaurant de Vogelensangh**

Vogelenzangseweg 182 - 2114 BD Vogelenzang - 023-7432712 - [www.devogelensangh.nl](http://www.devogelensangh.nl)

Maandag t/m zondag van 09.00 - 20.30 geopend

# Ontdek typisch Holland met de



# ZAAANSE SCHANS CARD



Boek tickets online: [www.dezaanseschans.nl](http://www.dezaanseschans.nl)

# Marinabc

## ARRIVAL

The park is equipped with a barrier with license plate recognition. The barrier is closed between 10pm and 8am. In case of emergency, it is possible to leave the park.

## ADRESSDETAILS

MarinaPark Residentie Bloemendaal  
Tweede Doodweg 17  
2114 AP Vogelenzang  
☎ +31(0)23 58 47 014

E: lobbyresidentiebloemendaal@marinaparken.nl

In case of emergencies, the above address, phone number and accommodation number should be passed on.

## AIRCO

Some properties are equipped with air conditioning as standard. These can be selected during the booking process or a separate air conditioner can be rented.

## ANIMATION

During holiday periods, we have an entertainment programme for young and old! The programme can be found in the lobby and in the MarinaParken app.

## BAKERY

Bakery van Maanen  
Palette 5  
2181 LB Hillegom

## BARBECUING AND OPEN FIRE

Lighting of open fires is not allowed. Charcoal, briquettes and fire pits are not allowed. However, an electric barbecue is allowed.

## APP

With the MarinaParken app, we can offer our guests even more service. When staying with us, this app is highly recommended. Packed with tips and information about the surroundings, cycling routes, games, magazines, cycling, E-chopper or contact us directly, ordering extras and more! Download it now from the App or PlayStore.



## BEACH

Seaside resorts such as Zandvoort, Bloemendaal aan Zee, Noordwijk, Katwijk and Scheveningen are in the vicinity of our park. The nearest beach is Langevelderslag and is easily accessible by bicycle or car.

## BRASSERIE CHEERS

On the park you will find Brasserie Cheers. Suitable for lunch and dinner or sitting out on the terrace.

☎ + 31 (0)6 130 58 122

E: brasseriecheers@gmail.com

## BICYCLE/E-BIKE RENTAL

Bicycles, E-bikes, cargo bikes and E-choppers are available for rent at the lobby. Ask about the possibilities at the lobby.

## CAMPING

Our campsite has standard pitches, XL pitches, seasonal pitches, camper pitches and a number of log cabins. The log cabins are not rented to young people. We have a wastewater disposal site and filling facilities for tanks.

## CARS

It is possible to park 1 car at the accommodation. At the front of the park, it is possible to use the public parking spaces. The permitted speed on the park is walking pace, with a maximum speed of 5 km/h. Pedestrians and playing children always have the right of way.



## CHEMICAL TOILET

Near one of the sanitary buildings is a dump for your chemical toilet. This is also where you will find the waste water outlet for the campers. Please do not use the regular toilets to empty your chemical toilet.

## DEPARTURE

Check-out is possible until 11:00 at the latest, during which time the key to a holiday home can be handed in at the lobby. On departure before 09:00, the key can be deposited in the grey letterbox at the park entrance. This is clearly marked with house number 17. Lock the property and do NOT leave the key in the property. Please leave the house broom-clean. The bed linen should be removed from the beds (leave the moltons on) and placed in a knotted rubbish bag by the front door.

## EARLY BIRD

Check in earlier and enjoy longer? You can. Check-in is then possible from 1 pm and costs an extra €35.

## EMERGENCY NUMBER

In case of emergency, the emergency number 112 can be called. Please inform us that emergency services are on their way. In an emergency, the lobby number can be called at any time. Outside opening hours and at night, the phone number is forwarded to one of our staff. Remember to clearly state the number of the accommodation to the emergency services. If the police or ambulance have been alerted, please share this with us so that we can open the barrier and lead the way in time.

## FEEDBACK

During the stay, we as management, staff and volunteers try to give everyone the best possible service so that a well-deserved holiday can be enjoyed. If there are things during the stay that are not satisfactory, please report this to the lobby so that we can improve it, if possible.

# Marinabc

## **GASCYLINDERS**

Various types of gas cylinders are available at the lobby.

## **GP/PHARMACY**

GP practice Meerweg:

☎ +31 (0)23 58 46 782

Kennemerpoort general practice:

☎ +31 (0)23 58 46 300

## **HOSPITAL**

The nearest hospital is:

Spaarne Gasthuis

Boerhaavelaan 22 in Haarlem

(Emergency Department)

or Spaarnepoort 1 in Hoofddorp

☎ +31 (23) 22 40 000

## **INTERNET**

Internet can be used free of charge in the accommodation. We also offer a wireless network in our brasserie. Very intensive use of the network connection may cause the internet to slow down.

## **LAUNDRETTE**

A launderette is available on the park, next to the park shop. Here you will find 2 washing machines and a dryer. Detergent is automatically added to the laundry. Current rates are displayed in the building.

## **LATE CHECK OUT**

Late check-out can be added at the lobby or during the booking process. The cost of this is €35. Check-out is then possible at 13:00.

## **LIABILITY**

MarinaPark Residentie Bloemendaal is not liable for any loss, damage, injury or accident caused to persons or property during or as a result of a stay at Residentie Bloemendaal.

## **LOBBY**

The lobby is open daily from 9am to 5pm. Different opening hours may apply in the early and late season.

## **PARKING**

It is allowed to park 1 car at the accommodation. This applies to both holiday homes and camping pitches. A possible second car can be parked in the car park in front of the barriers.

## **PARK SHOP**

Near the lobby you will find our shop. It provides fresh rolls and necessary groceries.

## **PETS**

Dogs are allowed on a leash. Dog faeces must be collected in bin liners and disposed of in the appropriate containers.

## **PLAYGROUND**

Children will not be bored. Our park has a sports field, bowling alleys and a playground with various pieces of equipment.

## **POLICE**

The visiting address of the nearest police station is:  
Julianaplein 1  
2101 ZC Heemstede

## **SALE**

On [www.marinaparkensales.com](http://www.marinaparkensales.com) you will find the current offer of the recreational homes we have for sale. More information? If so, please email: [verkoop@marinaparken.nl](mailto:verkoop@marinaparken.nl).

## **SHOWERS**

Hot water can be used free of charge in our sanitary facilities. No tokens are needed.

## **SILENCE TIME**

We operate a quiet time on our park from 23:00–07:00. This is to limit noise nuisance for other guests.

### **STAYXL**

Renting a holiday villa for a longer term? Ask the lobby for the possibilities.

### **SUPERMARKET**

COOP

Deken Zondaglaan 55  
2114 EB Vogelenzang

### **TOILETBLOCKS**

At all sanitary buildings there is a dump for chemical toilets and a flush tap.

### **SWIMMING POOL**

Take a refreshing dip in our 25-metre outdoor pool (1.40 m deep). For the little ones, we have a children's pool (40 cm deep). The pools are open from 8.30am to 6pm from mid-May to mid-September.

The pools are located on a large lawn with various play equipment and a restaurant.

### **VETERINARY CLINIC**

Groenendaal veterinary clinic  
Camplaan 2A  
2103 GW Heemstede  
☎ +31 (0)23 52 88 987

### **VISITORS**

Visitors to the campsite are of course welcome. They should report to the lobby on arrival.

### **WASTE DISPOSAL**

Waste should be deposited in the waste disposal area. Our environmental yard is located behind Brasserie Cheers (near the main entrance).



NIEUW

# Walra®

TRAVEL TEXTILES

Ervaar het **comfort** van passend bedtextiel in uw camper of caravan

Bestel vandaag nog met gratis verzending op [travel-textiles.com](https://travel-textiles.com)

Actiecode  
**CAMPING24**

Te gebruiken op [travel-textiles.com](https://travel-textiles.com) en geldig t/m dec. 2024

Verkrijgbaar in 5 Multifit modellen

Vanaf  
**€34.95**

ANTRACIET

GRIJS

WIT



Bestel online op [travel-textiles.com](https://travel-textiles.com) Nu met **gratis verzending**



# DE KLERK CAMPERS EN CARAVANS

*Hèt camper- en caravanbedrijf van de Bollenstreek!*



**Bij de Klerk bent u aan het goede adres voor nieuwe en gebruikte caravans en campers, verhelpen wij alle soorten schades, bieden wij onderhoud aan, stalling, verhuur en tal van accessoires in onze campingshop. Maar bovenal kunt u bij ons terecht voor advies, omdat ons team alleen maar bestaat uit fanatieke zomer- en winterkampeeders.**

Haarlemmerstraat 1B  
2182 HA, Hillegom  
0252-515238  
[info@deklerkcaravans.nl](mailto:info@deklerkcaravans.nl)  
[www.deklerkcaravans.nl](http://www.deklerkcaravans.nl)



**DE KLERK  
CAMPERS  
EN CARAVANS**

# Discover MarinaParken

MarinaPark  
**Residentie Bloemendaal**

MarinaPark  
**Residentie Nieuw Loosdrecht**

MarinaPark  
**Bad Nederrijn**



#### Triple A locations

MarinaParken's parks are located directly on the water or by the coast.



#### Sustainable villas

Holidaying in an exclusive, spacious villa with its own terrace and parking place.



#### Completely carefree

Personalized service. Ultimate enjoyment.

## Are you already following us?

Stay tuned for discount offers, the latest news, updates and the cutest guest photos.

